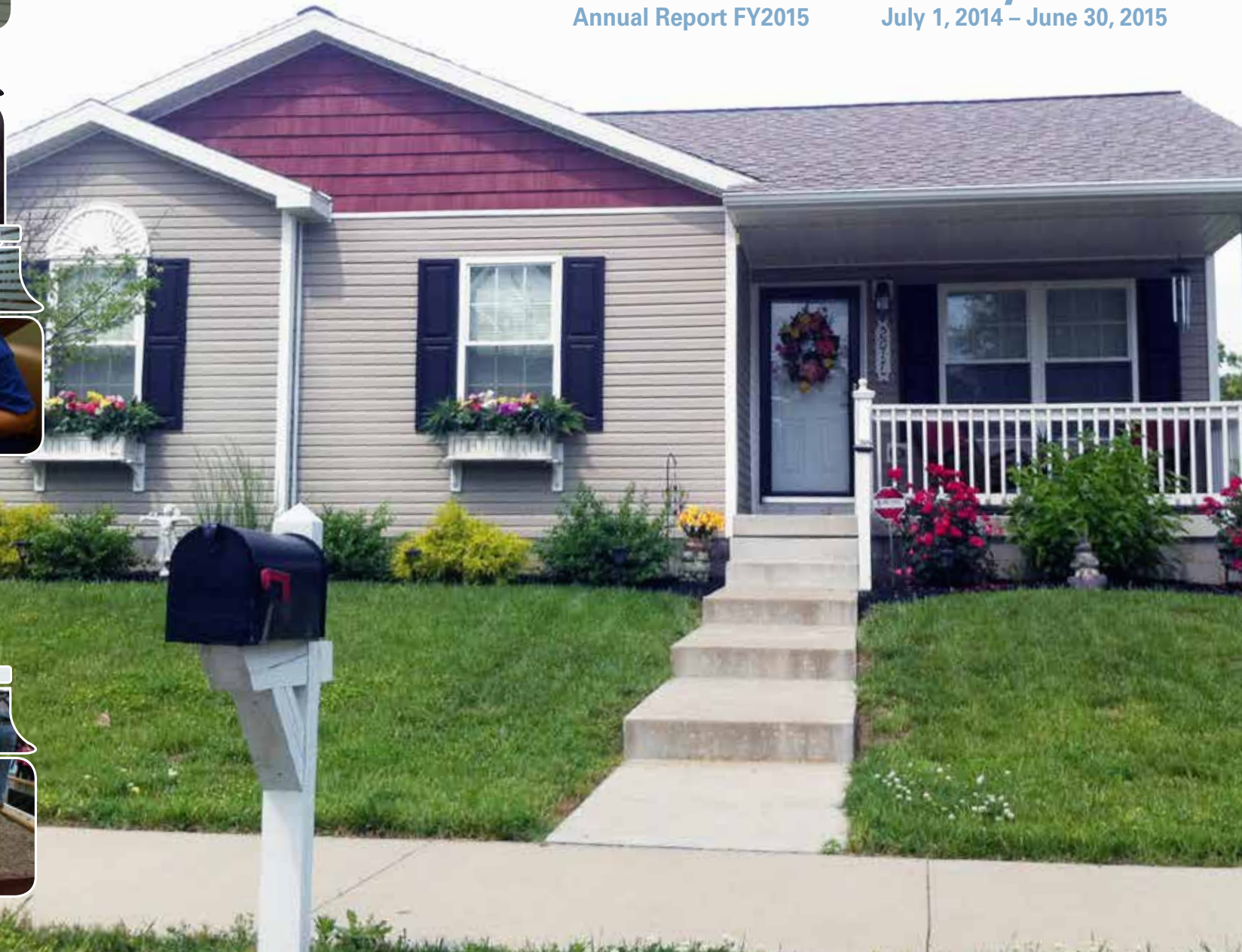


# *Because of this house...*

**Habitat for Humanity** of Evansville  
Annual Report FY2015      July 1, 2014 – June 30, 2015



## Our Vision

A world where everyone has a decent place to live.

## Our Mission

Seeking to put God's love into action, Habitat for Humanity brings people together to build homes, communities and hope.

## Core Values

1. Demonstrate the love of Jesus Christ.
2. Focus on shelter.
3. Advocate for affordable housing.
4. Promote dignity and hope.
5. Support sustainable and transformational development.

## *Because of this house...*

- Families like YOU have helped more than 445 homeowners live in decent, affordable housing.
- Evansville and Mt. Vernon neighborhoods have been revitalized and new homeowners have improved property values and boosted the local economy.
- Together, we have built homes, communities and hope.

# A Note From Leadership

In fiscal year 2015 Habitat was able to provide homeownership to nine families in Evansville and Mt. Vernon. Thanks to your generosity, Habitat for Humanity of Evansville homeowners are now a part of transformed neighborhoods and are change agents for those around them.

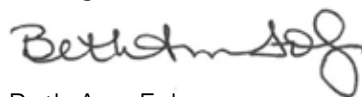
We had several significant builds that touched the lives of all those involved. Our seventh Women Build kicked off the year, with women and women-led businesses funding and building an affordable home. Building and volunteering came full-circle when Habitat homeowners, who were once required to volunteer for their sweat equity, returned to the construction site to organize and build. We also thank our returning partners like Lutherans for Habitat (building their 25<sup>th</sup> home), the United Church of Christ and Disciples of Christ Churches, Catholics for Habitat, the Mt. Vernon Ministerial Association and the Board of Directors for their commitment to providing a stable home for families in need.

The Evansville and Mt. Vernon communities' dedication to changing lives and neighborhoods in the area is unquestioned, and this year we were reminded of the global impact our community has. At the 2015 Habitat National Affiliate Conference, we were awarded the Sam Mompongo Award for reaching one million dollars in tithe. A portion of all funds raised in Evansville is sent to our Habitat partners abroad, Haiti and Jordan, and over the years you've helped 350 international families have a decent place to live.

As we look to the future we are confident our strategic plan "Transforming Lives, Changing Neighborhoods – 500 homes by 2018" will take us to a new level. We are placing an intense focus on the family – it's what's inside that counts. We will continue to build energy-efficient and low-maintenance homes, as well as create a sustainable organization that mobilizes resources and stewards them faithfully.

We are excited for your future involvement as we create new initiatives and scale up our work. With your help, we can transform lives and change neighborhoods. Thank you for your valued time, talent and treasure.

With gratitude,



Beth Ann Folz  
Executive Director



Monica Stinchfield  
President, Board of Directors



In 2014 we commemorated 30 years of service to the community and have now helped 445 families fulfill their dream of homeownership. You helped us celebrate this thriving ministry and the many initiatives undertaken during those three decades. Yet the need for simple, decent, affordable housing remains. "Transforming Lives and Changing Neighborhoods – 500 homes by 2018," represents a natural progression of Habitat's work and communicates our plan for the future.

### 2015-2018 Goals

- Build a transformational family support program that empowers families to become successful homeowners and leaders in the community
- Build the 500<sup>th</sup> Habitat home by 2018 by constructing homes in eight neighborhoods in Vanderburgh and Posey Counties in need of revitalization
- Build sustainability of the Habitat organization through comprehensive resource development, robust communications and faithful stewardship of gifts

Habitat believes that housing is foundational to breaking the cycle of poverty. With this new plan and its intense focus on family support, we will work to transform eight center-city neighborhoods in Evansville and Mt. Vernon.

*Because of this house...*

"Together, we can transform lives and change neighborhoods."

## Million-Dollar Tithe Reached

At the 2015 National Conference, Habitat for Humanity of Evansville was awarded the Sam Mompongo Award for reaching one million dollars in tithe contributions. A portion of all funds given in Evansville has gone to help build homes in our tithe country partners, previously Botswana, and currently Haiti and Jordan. Whatever your role, we thank you for funding and building homes here in Evansville so that we may also support families around the globe. Together, we are building a world where everyone has a decent place to live.



# Breaking Ground with Interfaith



*Members of the Habitat Interfaith Advisory Council and other community leaders come together at 501 Garfield Avenue to each give their blessings and break ground on an interfaith-sponsored Habitat home, built in partnership with homeowner Aireal Hall.*



*Because of this house...*

**"I have the opportunity to build with and learn about other faith communities."**

— Rabbi Gary Mazo  
Temple Adath B'nai Israel





Alan McCoy, Pastor  
Cliff Herring and Rabbi  
Gary Mazo finish  
painting porches for the  
National Day of Service  
on September 11, 2014.



**Lutherans for Habitat**  
built their 25<sup>th</sup> home in  
Jacobsville for partner  
family Lacey Moss.



Together, **United  
Church of Christ  
and Disciples of  
Christ Churches** have  
sponsored more than  
25 homes, including  
several individual  
churches' house  
sponsorships.



**Catholics for Habitat:**  
For the last 30 years  
Catholics from the  
Evansville Diocese have  
supported the ministry  
of Habitat. Since 2005  
a group called Catholics  
for Habitat has raised  
the funds, recruited the  
volunteers and helped  
10 families become  
homeowners.



**United  
Methodist  
Churches** have  
sponsored 6  
Habitat homes.



Dr. Thomas L. (Tom) Jones, special ambassador  
for the CEO of Habitat for Humanity  
International, Jonathan Reckford, gives the  
keynote speech at this year's Faith in Action  
Breakfast. Tom spoke about the need for members  
of all faith communities to work together to end  
poverty housing around the globe.

## Interfaith Advisory Council Mission Statement

We believe that the eradication of  
poverty is a religious/moral imperative.

We are dedicated to providing  
affordable housing through interfaith  
builds, advocacy, and awareness. We  
will model interfaith understanding  
and cooperation where people of all  
faiths and beliefs are celebrated and  
integrated into the community.



*Because  
of this  
house...*

"I've realized that if you  
keep trying, you'll reach  
your goal."

— Aireal Hall, homeowner

# Youth United Build



*Youth United members Marie Folz and Lindsey Deig deck the floor of Sheree Phifer's home, the first Habitat house in Indiana to be sponsored by a Youth United chapter.*



*Because of this house...*

**"I feel blessed. Soon I will finally feel comfortable and won't have to live paycheck to paycheck."**

— Randi Finn, homeowner





*Youth United members from Mater Dei and Reitz High Schools collect donations before the big football game during their WHOSE HOUSE fundraiser.*



*Painting the sides of yard barns was one activity during the 2013 Youth United Spring Retreat.*



*During the holiday season, Youth United enjoyed Christmas caroling around the New Haven Subdivision.*

Youth United invites youth, ages 14–18, to work together to fund and build homes in their own communities. Targeting young, enthusiastic volunteers to build homes, Youth United develops leadership skills and engages youth in positive service experiences.

*Because of this house...*

**"I am able to come together with others my age to volunteer and change families' lives in the community."**

– Marie Folz, 2014–2015 Youth United President



# Family Advocates Lend a Hand

Family advocates provide guidance, support and encouragement to future homeowners while they are working to complete their sweat equity and homeownership program responsibilities. Through these activities, future homeowners are empowered to become strong leaders in our community and advocates are given the opportunity to build a meaningful relationship with future homeowners.



*Marcia Ballard, a homeowner in the Evansville area and family advocate, helps build the home of Areal Hall, as a part of her relationship and support of Areal. Marcia is pictured (at left) with Rabbi Gary Mazo and Gloria Mazo.*

*Members of the inaugural class of Habitat for Humanity of Evansville's Emeritus Board were introduced and honored as the highlight of Habitat's Anniversary Dinner held October 22, 2014. They include —*

*Elmer Berberich, Rev. Don Bernhardt, Dick and Naomi Cook, Butch Feulner, Jacque Hardin, Elizabeth Kalb, Rev. Steve Lintzenich, F. P. and Pearlie Miller, Jim Perigo, Lu Porter, Rev. Jim Prickett, Leanne Pritchett, Rev. Richard Schechter, Jan Thuerbach and Scott Wittman*



# Inaugural Class of Emeritus Board Inducted

Habitat for Humanity of Evansville is pleased to announce the names of former board members upon whom the title "emeritus" has been bestowed.

Emeritus board members were nominated by the current board of directors and were chosen based on the leadership, dedication and tireless service they exhibited while on the board and for their continued interest in and support of Habitat since that time.



# Newest Homeowners in Our Community



**Luke and Brittney Datzman**



**Rukiya Durden**



**Tamara Lewis**



**Sara McDonnough**



**Carmella McKinnon**



*Habitat Board of Directors*

**Stephanie Mitchell**



**Maria Moreno**



*In Memory of John H. and Mary Ada Berg with Habitat Homeowners*

**Tanika Stewart**



**Amique Thomas**



*Catholics for Habitat*

## Building Sustainability with the Perigo-Prickett Society

Throughout the years, we thank all those who have given annually to build homes for those in need. As we look to the future and work to ensure the sustainability of our organization, we are grateful that membership in the Perigo-Prickett Society continues to grow. The Perigo-Prickett Society was founded in 2000 to recognize donors who have remembered Habitat for Humanity of Evansville in their estate plans or made a contribution to the Habitat for Humanity of Evansville Endowment Fund with the Vanderburgh Community Foundation. The members of the Perigo-Prickett Society are listed below.

*Tom and Marcia Ballard*

*Lois M. Bennett<sup>†</sup>*

*Lola J. Bromm<sup>†</sup>*

*David and Ginny Cook*

*Melvin L. Dickhaut<sup>†</sup>*

*LeRoy and Pat Dilger*

*Greg and Joyce Donaldson*

*Marjorie E. Ewing<sup>†</sup>*

*Gilbert and Alberta*

*Fehrenbacher<sup>†</sup>*

*Butch and Linda Feulner*

*Jim and Emily Fowler<sup>†</sup>*

*Theresa Frielinghausen*

*John and Lucille Gooch<sup>†</sup>*

*Dan and Lou Ann Green*

*Ben Greiner<sup>†</sup>*

*Eugene and Barbara Hamlow*

*Joyce Hendrix*

*Nancy Hitch*

*Mike and Carol Hull*

*Elizabeth Kalb*

*Dr. Llewellyn Lieber<sup>†</sup>*

*David<sup>†</sup> and Colleen McLaughlin*

*Bob and Shirley<sup>†</sup> Nicholson*

*Dan and Laura Niemeier*

*Jim and Pat Perigo*

*Jim and Janette Prickett*

*Lori Reed*

*Charlotte Richardt<sup>†</sup>*

*Aileen Roberts*

*Richard and Joann Schechter*

*Carl and Beverly<sup>†</sup> Schofield*

*Kenneth Silverman<sup>†</sup>*

*Steve and Wendy Thomas*

*Fran and Vernon Vix*

*Maryedna Wilkie<sup>†</sup>*

*Scott and Holly Wittman*

*Richard and Paula<sup>†</sup> Yeager*

*Anonymous (3)*

<sup>†</sup> Denotes those who have passed



*Because of this house...*

**"I have found brothers and sisters in the Core Crew and the entire ministry has made my life richer."**

– Dick Yeager, Core Crew and Perigo-Prickett Society Member



# Core Crew

## 0 – 5 Years

Steve Bartlett  
Santaram Chilukuri  
Clay Ellerbrook  
Robert Grant  
Wayne Griffith  
Stephen Lucas  
Marlan Maidlow  
David Marienau  
Mark Martinez  
Donna Mayes  
Barb McCandless  
Dan Michel  
George Neireiter  
Zachary Neukam  
Lee Obenchain  
Dennis Rueger  
Dan Schenk  
Kathy Schenk  
Dave Schnakenburg  
Rex Smith  
Tom Stein

Ray Sullivan  
Steve Titzer  
Jim Tolen  
Larry Vadbunker  
Jerry Wiegand

## 6 – 10 Years

Jim Bartlett  
Don Gillies  
Jim Havens  
Jim Hineborg  
Dale Oberbeck  
Carroll Weber  
Dick Yeager

## 11 – 15 Years

Clyde Austin  
Tom Emge  
Jack Main  
Jim Studwell

## 16 – 20 Years

Chuck Fellwock  
Chris Huus  
Jim Kahre  
Jaylene Kiefer  
Carl Schofield  
Jim Stevens  
Jerry Weiss  
Delbert Welte  
Delbert Wittman

## 21 – 25 Years

Mike Bradford  
Jack Dempsey  
Bob Keil  
Joe Lamey  
Bob Voegel

## 30 + Years

Elvin Reed

*Special congratulations and  
thank you to Elvin Reed for his  
31 years of service with Habitat!*

## Emeritus

Elmer Berberich  
John Buthod  
Spike Durant  
Harold Godeke  
Jacqueline Hardin  
Ray Lambert  
Kevin Long  
Nick Long  
Bob Nicholson  
Rock Reed  
Steve Sorensen  
Jerry Taylor  
Bob Warner  
Bruce Wright

*We fondly remember Emeritus Core  
Crew member, Dale Martin,  
who passed away on  
February 10, 2015.*

## Landscaping Team

Carol Cates  
Fran Vix

*Because  
of this  
house...*

**"We are put here to  
help other people."**

– Jim Studwell,  
Core Crew Member since 2001



# Board of Directors

## Officers

FY2015: July 1, 2014 – June 30, 2015

### President

Monica Stinchfield  
Senior Vice President  
First Federal Savings Bank

### Vice President

Bill Schirmer  
President and CEO  
Evansville Teachers Federal Credit Union

### Treasurer

Steve Titzer  
Community Volunteer

### Secretary

Joyce Donaldson  
Community Volunteer

## Members

Jim Bartlett | Community Volunteer  
Julie Cline | Manager, Integrated Operations Support | WOW! Internet, Cable and Phone  
Barb Daum | Director of Quality | Industrial Contractors Skanska  
Rev. Dennis Davenport | Pastor | Eastminster Presbyterian Church  
Tim Flesch | Retired President and CEO | St. Mary's Medical Center  
Danny Garness | Senior Loan Officer, Commercial Lending Manager | First Security Bank  
Danyelle Granger | Vice President of Diversity and Outreach | Old National Bank  
Jim Havens | Community Volunteer  
Brian Hawkes | Vice President, Operations | Audubon Metals LLC  
Cliff Herring | Pastoral Care Director | Christian Fellowship Church  
Tricia M. Hollander Henning | Senior Vice President | The Hollander Group at Hilliard Lyons  
Mike Hull | President, Senior Portfolio Manager | Donaldson Capital Management  
Jeff Justice | President | Hafer  
Sr. Theresa Peck, DC | Administrator | Mater Dei-Seton Campus, Province of St. Louise  
John B. Phipps | Chief Lending Officer | Heritage Federal Credit Union  
Steve Thomas | Attorney | Gerling Law  
Jim Wittman | Vice President of Development and Leasing | Regency Properties



*Because of this house...*

“Whether you give your time, talent or treasure by being a board member, committee member, volunteer, or donor you always get more in return than what you give to Habitat.”

– Monica Stinchfield, Board President



# Committees

## Construction

The Construction Committee is responsible for overseeing construction activities of Habitat for Humanity of Evansville.

Tom Bailey  
Jim Havens (chair)  
George Neireiter  
Tina Nuffer

Wesley Rees  
Steve Smith  
Andrea Ward  
Kerry Wire

## Delinquency Prevention

The Delinquency Prevention Committee works with Habitat homeowners who are behind in mortgage payments so they can get back on track.

Krista Bryant  
Beth Folz

John Phipps  
Monica Stinchfield

## Development

The Development Committee works to secure the financial resources to advance the mission and ministry of Habitat for Humanity of Evansville.

Bill Bussing  
Joyce Donaldson  
Diane Floyd  
Beth Folz  
Danny Garness  
Tricia Hollander Henning

John Hevron  
Mike Hull  
Lee Jerstad  
Sr. Jane Michele McClure  
Bill Schirmer  
Steve Thomas (chair)



## Faith Relations

Members of the Faith Relations Committee serve as advocates for the Habitat ministry by sponsoring the annual Faith in Action Breakfast and increasing understanding, acceptance and support for Habitat in the faith community.

Vera Campbell  
Carol Cates  
Rev. Dennis Davenport (chair)  
Lois Duncan  
Roger Duncan

Beth Folz  
Jane Friona  
Cliff Herring  
Rev. Seung Hu Lee  
Sr. Jane Michele McClure  
Jim Smith

## Family Selection

The Family Selection Committee recruits and selects the families that are presented to the Board of Directors for approval to become part of the Habitat for Humanity of Evansville homeownership program.

Marcia Ballard  
Pat Bartlett  
Tina Campbell  
Vera Campbell  
Julie Cline  
Beth Folz  
Jacqueline Hardin  
Jeff Harger  
Alice Huus  
Mag Lindsey

Kathie Lindsey  
Jeanne Mesker  
Cary Nelson  
Monica Stinchfield (chair)  
Margee Stone  
Ann Webster  
Susan Weis  
Andrew Williams  
Jenny Wuchner

## Finance/Audit

The Finance Committee works to assure that appropriate accounting policies and procedures are being used by the organization in accordance with GAAP (Generally Accepted Accounting Principles).

Jim Bartlett  
Brad Cadden  
Tim Flesch  
Beth Folz  
John Phipps

Monica Stinchfield,  
Klara Stone  
Steve Titzer (chair)  
Jim Wittman  
Jenny Wuchner

## Governance

The Governance Committee is responsible for ongoing review and recommendations to enhance the quality and future viability of the board of directors. The group deals with board role and responsibilities, composition, orientation and ongoing education, recruitment and preparation of future leadership, and assessment of overall effectiveness.

Joyce Donaldson (chair)  
Beth Folz  
Sr. Jane Michele McClure

Bill Schirmer  
Steve Thomas



## Homeowner Support

The Homeowner Support Committee provides resources, guidance and support and builds a relationship with each future homeowner throughout the sweat equity process and first year of homeownership.

Marcia Ballard  
Becky Isley  
Shelah Kirk  
Lynn Kirkland  
Emily Parker  
John Phipps

Lori Reed  
Rosalind Robinson  
Monica Stinchfield  
Jeff Stucke  
Monica Weiss

## Interfaith Advisory Council (IAC)

IAC works to fulfill one of the highest aims of Habitat for Humanity International, which is to challenge world religious leaders to work together to end poverty on the planet, using decent shelter as a transformative and foundational strategy to accomplish that vision. IAC is committed to action by building and advocating for decent, affordable housing in our community.

Marcia Ballard  
Charles Berger  
Ayana Blair  
Rev. Dennis Davenport  
Tim J. Fitzgibbon  
Rev. Kevin Fleming  
Beth Folz  
Rev. Mitch Gieselman  
Tammy Gieselman  
Cliff Herring  
Dr. Mohammad Hussain

Prahlad Ray Kedia  
Jane Leingang  
Paul Leingang  
Rabbi Gary Mazo (chair)  
Gloria Mazo  
Sr. Jane Michele McClure  
Alan McCoy  
Zac Parsons  
Dr. Saiyid Masroor Shah  
Deb Vannatter

## Partner Family Training and Engagement (PFTE)

The PFTE Committee works to improve pre-purchase homeownership training and post-purchase support. PFTE envisions a cadre of Habitat homeowners who lead their neighborhoods and serve as advocates for future homeowners.

Cynthia Bennett  
John Browning  
Nadine Coudret  
Sharon Goldston  
Carol Markle-Hull  
Mike Hull  
Becky Isley  
Ben Joergens  
Sharon Overton  
Sr. Jane Michele McClure

Denita Miles  
Hank Miles  
Ronda Priest  
Lori Reed  
Cookie Smith  
Charleen Spear  
Jeff Stucke  
Fran Vix  
Andrea Ward  
Ken Wempe

## Real Estate

The Real Estate Committee secures building sites for Habitat houses.

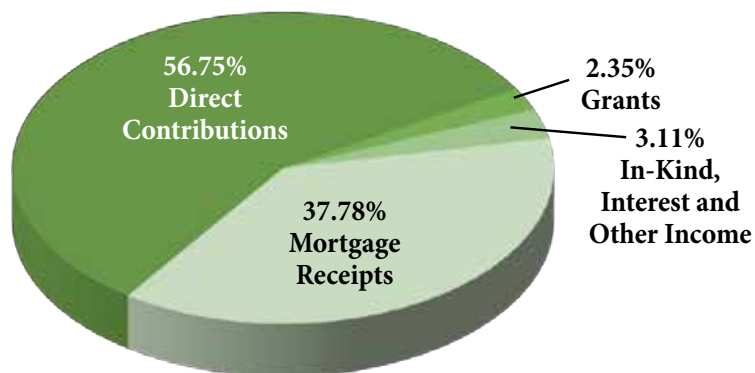
Butch Feulner  
Steve Smith

Jim Wittman

# Fiscal Highlights

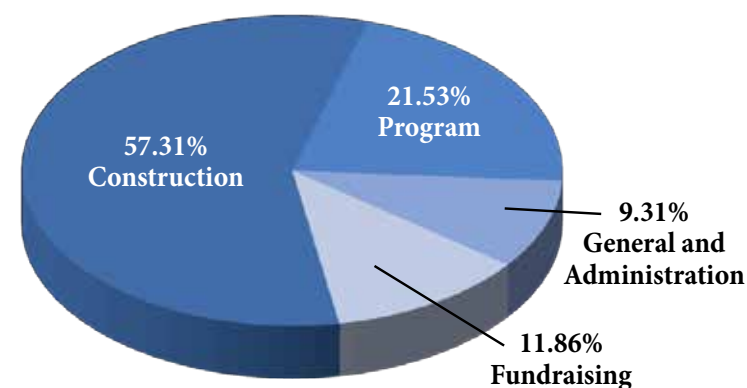
July 1, 2014 – June 30, 2015

## Cash Receipts



Cash Receipts		
Direct Contributions	56.75%	\$ 1,146,184
Grants	2.35%	47,500
In-Kind, Interest and Other Income	3.11%	62,813
Mortgage Receipts	37.78%	763,060
	100%	\$ 2,019,557

## Cash Disbursements



Cash Disbursements		
Construction	57.31%	\$ 912,769
Program	21.53%	342,861
General and Administration	9.31%	148,203
Fundraising	11.85%	188,816
	100%	\$ 1,592,649

Cost to Sponsor  
a Habitat Home:



Total Volunteer  
Hours:



Economic  
Impact:



A copy of the audited financial statement is available upon request  
or by visiting the Habitat for Humanity of Evansville website at [www.evansvillehabitat.org](http://www.evansvillehabitat.org).

\* Includes cash on construction, local business income, local wages and salaries, taxes and fees from construction, and local income related to move-in spending



# Donors

*Many thanks to all of our donors who supported the mission of Habitat for Humanity of Evansville by making a financial contribution between July 1, 2014 and June 30, 2015.*

## Full Build Sponsors (\$80,000+)

Alan and Sharon Braun Family  
Foundation  
Anonymous (2)

## Lead Build Sponsors (\$55,000 – \$79,999)

Anonymous (1)

## Partner Build Sponsors (\$25,000 – \$54,999)

Alcoa Foundation  
GE Foundation  
St. Mary's Medical Center  
Taylor Bros.  
Anonymous (1)

## Foundation Sponsors (\$10,000 - \$24,999)

Bettye Calvert \*  
City of Evansville Endowment Fund  
Greg and Joyce Donaldson  
Tim and Debbie Fisher  
Islamic Society of Evansville  
Jeff Overton  
Toyota Motor Manufacturing, Indiana  
Anonymous (2)

## Master Builders (\$5,000 – \$9,999)

Elmer and Ellen Berberich  
Bethlehem United Church of Christ  
John and Karen Cinelli  
David and Ginny Cook  
Donaldson Capital Management, LLC  
First Federal Savings Bank  
Jack Droste  
John Engelbrecht  
Jim and Carol Havens  
Jeff and Tricia Henning  
Salem Heusler United Church of Christ

Springleaf Financial Services  
St. John the Evangelist Catholic Church  
Temple Adath B'Nai Israel  
The Women's Hospital  
Steve and Wendy Thomas  
Paul and Martha Weaver  
Mike and Maria Weaver

## Builders (\$2,500 – \$4,999)

Bristol-Myers Squibb Foundation  
Angelika and Dennis Clark  
David and Beth Clark  
Crossroads Christian Church  
Eastminster Presbyterian Church  
First Presbyterian Church  
Ron and Beth Folz  
Scott and Kathryn Harris  
John and Kelly Hevron  
Mike and Carol Hull  
Immanuel United Church of Christ  
Bill and Sandy Schirmer  
James and June Schwengel  
Joann Schwentker  
Curt and Nancy Shinabarger  
Simpson United Methodist Church

Southern Indiana Tire (Best One Tire)  
St. Boniface Parish  
St. John's East United Church of Christ  
St. Paul's United Church of Christ  
Keith and Elaine Stanley  
Steve and Sandy Titzer  
Vernon and Fran Vix  
John and Marian Witting  
Jim and Laura Wittman  
Dick Yeager  
Youth United  
Anonymous (2)

## Founders (\$1,000 – \$2,499)

Mark and Sarah Aiton  
All Saints Parish  
Alles Foundation, Inc.  
Marcia and Tom Ballard  
Randy and Linda Becker  
Lon and Jeanne Bell  
Boeing Employees Credit Union  
Dean and Karen Bosler  
Dr. Charles and Mrs. Shirley Brizius  
Scott and Lori Brizius  
J. Michael and Ann Burnley  
Catholics for Habitat  
Carl and Kay Chapman  
Charlotte M. Richardt  
Endowment Fund  
Dick and Naomi Cook  
Donna Cooke  
Corpus Christi Catholic Church  
Bob and Cecelia Crowe  
East Side Christian Church  
Jim and Cathy Edrington  
J.P. Engelbrecht  
Evansville Sports Corporation Golf, LLC



F. C. Tucker Emge Realtors  
First Presbyterian Church of Mount Vernon  
First Security Bank  
Butch and Linda Feulner  
Gary and Paula Gerling  
Donald and Patricia Gillies  
Harold and Joyce Godeke  
William and Jeanne Hardesty  
Don and Judy Heberer  
Heritage Federal Credit Union  
David and Betty Hillenbrand  
Holy Rosary Catholic Church  
Immanuel Lutheran  
Koch Foundation Inc.  
Don Korb  
Jim and Barbara Long  
Macerich Management Company  
Dr. Alan and Mrs. Marie Marty  
Blair and Sarah McKee  
David\* and Colleen McLaughlin  
Matthew and Susan Melfi  
Mt. Vernon Ministerial Association  
Old National Bank  
Ron and Sharon Overton  
John and Becky Phipps  
Denny and Cassie Quinn  
Salem Church of Darmstadt  
Sater Enterprises, LLC  
Oscar\* and Dottie Schauss  
Barry and Darby Schnakenburg  
John and Diane Schroeder  
Charles Sith  
Tom and Greta Smythe  
St. Benedict Cathedral  
St. John's United Church of Christ Downtown  
St. Mary's Medical Center  
St. Matthew Catholic Church  
St. Paul's United Church of Christ German Township  
St. Peter's United Church of Christ  
Jim and Pam Stevens

Monica and Darrell Stinchfield  
William and Susan Taylor  
The Methodist Temple  
Trinity United Church of Christ  
Barbara Trockman  
Jeff and Nancy Trockman  
William and Mary Tucker  
Scott and Roberta Veazey  
Vectren Foundation  
Delbert and Judy Wittman  
Scott and Hally Wittman  
Rev. Joseph Ziliak  
Anonymous (3)

## Dedicators (\$500 – \$999)

Glen and Becky Agler  
Marilyn Allen  
Dr. Frank and Mrs. Pauline Amodio  
Beth Anderson and Rian Coutinho  
Dr. Thomas and Mrs. Carol Anderson  
Ron and Margaret Angermeier  
Helen Arensman\*  
Mary Barron  
Dr. Jerry and Mrs. Shirley Becker  
Richard and Carolyn Bohm  
Vicki Brasel  
Patricia Bray  
Dale and Phyllis Buente  
Stephani and John Catt  
Dustin and Julie Cline  
Community Foundation Alliance  
Dr. and Mrs. Matthew Datzman  
LeRoy and Pat Dilger  
Dr. Mark and Mrs. Sally Dominick  
Michael and Judy Dukes  
Joe and Patti Easley  
Nancy Erwin  
Tim and Kay Flesch  
Mark and Diane Floyd  
Joe and Sybil Foster  
Kristie-Kae and Rick French  
Andy and Darlene Goebel  
Mick and Debra Gottman



# Donors

Dan and Lou Ann Green  
Daniel and Ellen Grimm  
Marvin and Beverly Hill  
Ted\* and Nancy Hitch  
Linda and Richard Hobbs  
JD Levy & Associates  
Michael and Kimberly Keene  
Paul and Jane Leingang  
Marlan and Pat Maidlow  
Charles and Susan Martin  
Colleen Martin  
Ken and Peggy Merten  
Doug and Audrey Mikolasek  
Stephanie Mitchell  
Brad and Lynn Muehlbauer  
Alan and Sandy Newman  
Anne Nicholson



Dan and Laura Niemeier  
George Payne  
Reitz High School  
Ross and Kim Rudolph  
Mike and Ann Schapker  
Bruce and Kathleen Schneider  
Specialty Tooling, Inc.  
St. Francis Xavier Catholic Church  
Jim and Barbara Studwell  
Dr. Richard and Mrs. Melinda Tibbals  
Tropicana Evansville  
Jodi Uebelhack  
Uniseal, Inc.  
University of Southern Indiana  
Darren and Lisa Verkamp  
Dr. and Mrs. Santi Vibul

## Cornerstones (\$250 – \$499)

David and Laura Alexander  
Philip Ames  
Dr. Sam and Mrs. June Baker  
Moira Bandoli  
Frank Bauer  
Carol Bengert  
Bethel United Church of Christ  
Steve and Judy Blankenberger  
Tom and Donna Blythe  
Joseph and Jane Braddock  
Steve and Peg Braun  
Chamber of Commerce of SW Indiana  
Andy and Jackie Cosgrove  
Rev. Dennis and Mrs. Emma  
Davenport  
Elise Deppen  
Ed Diamond  
Dan and Erin Diehl  
Electrical Maintenance  
& Construction, Inc.  
Michael and Kathy Erwin  
Richard and Rita Eykamp  
Tim and Anne Fiedler  
Elizabeth Flittner  
Dr. Edward and Mrs. Bettye Fritz  
GoodCents Solutions Energizing  
Indiana  
Eugene and Barbara Hamlow  
M. Susan Hardwick  
Charles and Donna Hedges  
Joyce Hendrix  
Jim Hineborg  
Greg and Candice Hofmann  
Robert and Linda Lou Holder  
Paul Johnson  
K. Kleindorfer & S. A. Wolf Fund  
Michelle Kirk and Mark Fischer  
Knights of Columbus  
Cheryl Kuchna  
Dr. Thomas and Mrs. Barbara Liffick  
Magdalene Lindsey  
Dee McDonald  
Tim and Lisa McGuire  
Rick and Cynthia Merriwether  
Dr. Daniel and Mrs. Sharon Michel  
Ronald Mitchell  
James and Mary Kay Muehlbauer  
Fred and Kim Mulfinger

David and Kathy Nelson  
Lee and Becky Obenchain  
Jeffrey and Sally Olson  
Gary and Julie Pfister  
Lewis and Jeanette Plane  
Ronald and Joan Pohl  
Edward and Nancy Prusz  
Aileen Roberts  
Greg and Debra Rorie  
Dr. J. Christopher and  
Mrs. Rosetta Sartore  
Ann Scheitlin  
Rodney Spaw  
Barbara Steele  
Edward and Shirley Swan  
Dr. Thomas and Mrs. Doris Vonderhaar  
Delbert and Thelma Welte  
John and Susan Wetzel  
Melvin and Jacki Wildeman  
Glenn and Jennifer Wuchner  
Zoar United Church of Christ

## Developers (\$100 – \$249)

Hugh and Carol\* Ahlering  
C. J.\* and Charlene Altstadt  
Melvin and Helen Anson  
Norm and Juli Bafunno  
Tom and Jennifer Bailey  
Clarence and Esther Bailey  
Jim and Jane Balbach  
Josh and Amy Barron  
Thomas and Mary Baumgart  
Mariann Baumgartner  
Mary Beckman  
Joyce Benner  
Barbara Bernhardt  
Royce and Ann Bickett  
Darrel and Polly Bigham  
Richard and Beth Blankenship  
Bob and Nancy Bock  
Joe and Lisa Bolatto  
Luke Boll  
Bruce and Ginny Bonenberger  
Ira and Terry Boots  
Kim Borrer  
Alan and Catherine Bragin  
Deborah Brakel  
Dennis and Julie Brandon  
Rev. Ray Brenner  
Norman Brown  
Bill and Betsy Brubeck  
Buffalo Wild Wings  
John and Sue Buthod  
Jeff and Margaret Ann Byrne  
David Carson  
Jeanne Carter

Albert and Ronda Cassady  
Joanna Chang  
John Chlapik  
CKS Real Estate Inc.  
William and Margaret Connolly  
Mark and Margaret Conway  
Jack and Phyllis Corn  
Joan Creech  
Wayne Culley  
Doug and Tammi Dant  
Lois Dauble  
David Matthews Associates  
Jane Davis  
Linda Dennis  
Jack Deppe and Shari Barrett  
Dr. Llewellyn Lieber Charitable Fund  
Barry and Anna Dubuque  
Jim and Kim Dunkelbarger  
E & B Paving, Inc.  
Niel and Karen Ellerbrook  
Jim and Kristie Elsner  
Norman Elsner  
Thomas Elsner  
Equifax Foundation  
Evansville Icemen  
Evansville Yoga Studio  
Faith United Methodist Church  
Robert and Mary Kay Fehrenbacher  
Charles and Linda Fellwock  
Robert and Phyllis Fenneman  
Anne Fischer  
George and Julie Folz  
Susan Foster  
Stephen Fowler  
David and Jean Freeze  
Darlene French  
Rick and Kristie-Kae French  
John and Jane Friona  
Jon and Lois Fuquay  
Stephen and Karla Gaynor  
Lyndell and Carol Gears  
Bill and Katie Gilmore

Jon and Nancy Golding  
Raymond and Mary Goodman  
Gary and Charlotte Grabert  
Alfred and Doris Grabhorn  
Dr. Cynthia Graves and  
Dr. Glenn Tindell  
Judy Grebe  
David and Kelley Greer  
Albert and Shirley Gretler  
Chandler and Jingle Hagey  
Linda Hall  
Larry and Carol Haller  
John and Donna Hamilton  
Greg and Karen Hamilton  
Jacque Hardin  
Vickie and Darrell Harris  
Michael Harrison  
Robert Hassee  
Mike and Nora Heaton  
Judge Carl and Mrs. Jeanene Heldt  
Henderson Chevrolet Buick GMC  
Wayne and Jewell Henning  
Rev. Kenneth Herr  
Dr. Leland and Mrs. Judith Hodoval  
George Hollander  
Tim and Jennifer Hollander  
Donald and Mariette House  
Randy and Cynthia Hupfer  
Dr. Mohammad and  
Mrs. Rukshanda Hussain  
Chris and Alice Huus  
Ronald and Judith Irvin  
Jerald and Susan Jindrich  
Gil and Marcia Jochem  
Patrick and Paulette Johns  
Eddie and Vera Johnson  
Arthur and Ann Johnson  
Stephen Johnson  
Todd and Willie Kain  
Elizabeth Kalb  
Kappa Kappa Kappa Inc.  
Joan Keck







Ray and Sushila Kedia  
 Gary and Michelle Keeton  
 Susan and John Keil  
 K. Wayne and Barbara Kent  
 Jaylene and Don Kiefer  
 Wayne and Beth Kinney  
 David and Faye Kishline  
 Cindy and Bill Kluemper  
 William and Mary Knapp  
 Carol Koewler  
 Donald and Margaret Kuhlenschmidt  
 Joe and Charlene Lamey  
 William and Ruth Lang  
 Tari Langford  
 Mary Laval  
 Dr. John Lawler  
 Dr. Matthew and Mrs. Karen Lee  
 Larry and Nancy Lewis  
 Gary and Kathy Lindauer  
 Line X of Evansville, Inc.  
 Evelynne Lonnberg  
 Judy Lopez  
 Barbara Lucas  
 Robert Ludwig  
 Jill and David Marcrum  
 James and Lois Martin  
 Marcia Mauer  
 Barbara Jo May  
 Marilyn May  
 Donna Mayes  
 Sheryl McBride  
 Sr. Jane Michele McClure  
 John McLaughlin  
 Judy Mehne  
 Louise Mehringer  
 Tony and Gretchen Melchior  
 Dr. Mark and Mrs. Jolene Meyers  
 Scott and Donna Milam

Daniel Miller  
 Jerome and Camilla Moeller  
 Ronald and Doris Mohr  
 Michael and Carol Moore  
 Dr. Kerry and Mrs. Ricki Newman  
 Mary Eleanor Nicholson  
 Tom and Joan Niemeier  
 Tim and Jill Oeding  
 Sharon Olson  
 Larry and Carrie Owens  
 Ann Partridge  
 Robert and Jackie Patten  
 Doris Paulson  
 Charles Pearson  
 Mike and Merna Peden  
 Dr. Ahmet and Mrs. Rebecca Percinel  
 Performance Refinish Supply, Inc.  
 Jim and Pat Perigo  
 Wayne and Martha Pokorney  
 Lawrence and Madonna Preske  
 Jim and Janette Prickett  
 Rev. Kathryn Puckett  
 Dr. John and Mrs. Barbara Pulcini  
 Lue Purtzer  
 John Ralph  
 Mark and Robbie Rasure  
 Nanda and Sridevi Ravipati  
 Barbara Renshaw  
 Phyllis Ries  
 Don and Joy Riggs  
 James Rine  
 Terrell Riney  
 Christi Robinson  
 Judy Rode\*  
 Fred and Betty Roeder  
 Karen and Richard Rombauer  
 Bob and Mary Lue Russler  
 Tom Ryder

Al and Jackie Sartore  
 Rev. Richard and Mrs. Joann Schechter  
 Sherri Scheller  
 Dan and Kathy Schenk  
 Doris Schlottman  
 William and Mary Schmidt  
 Dennis Schmidt  
 Mary Schmitt  
 Linda Schmitt  
 Gerald and Phyllis Schreiber  
 Jim and Kristine Schroeder  
 Frank and Judy Schultheis  
 Diana Seibert  
 John and Cindy Shea  
 Shepherd of the Hills Lutheran Church  
 Roger and Elizabeth Shinnerl  
 Dr. Youssef and Mrs. Andria Siage  
 Silicon Valley Community Foundation  
 James Simon  
 Jim and Margie Smith  
 Thomas and Katherine Solecki  
 Dr. and Mrs. Terry South  
 Bill Spurling  
 St. Lucas United Church of Christ  
 St. Matthew's United Church of Christ  
 St. Theresa Catholic Church  
 Quentin and Ann Stahl  
 Richard and Barbara Steedman  
 Laurence and Judith Steenberg  
 Beth Stone  
 Audrey Stoner  
 Terry and Angie Stumpf  
 John and Julie Talley  
 Jerry and Deanna Taylor  
 Rev. Ted Tempel  
 The Rug Merchant  
 Douglas and Mary Thompson  
 Mary Tisserand  
 James and Joyce Tolen  
 Mary Tornatta  
 Siegrid Tuttle  
 Unitarian Universalist  
 Church of Evansville  
 University of Southern Indiana  
 Fraternity and Sorority Life  
 Laurel Vaughn  
 Margaret Vogel  
 Richard Wambach  
 Roselle Weinzapfel  
 Jerry and Helen Weinzapfel  
 Monica Weiss  
 Larry Weyer  
 Whirlpool Foundation  
 Alyce White  
 Jim and Karen Will  
 Eileen Will

John and Linda Wilson  
 Rev. L. D. Woods  
 Russell and Susan Woosley  
 Mark Wright  
 Glenn and Jennifer Wuchner  
 Becky York  
 Dorothy Zehner  
  
**Groundbreakers (\$1 – \$99)**  
 Randy and Amy Abbott  
 Linda Adcock  
 Eugene and Rose Adler  
 Sally Alden  
 Aldersgate United Methodist Church  
 Robert and Carolyn Allen  
 Karen Alms  
 Phyllis Alspaugh  
 Amazon Smile  
 Marjorie Angermeier  
 James Angermeier  
 Terry and Pamela Armstrong  
 Doris Arnold  
 Anthony and Nancy Arvin  
 Minna Ashok  
 David and Vicky Ashworth  
 Deborah and Mark Atchison  
 Jason and Christina Atherton  
 Auto Body Supply Company

Ann Bagbey  
 Darryl Baker  
 Larry and Sharon Barnes  
 Sandra Bass  
 David Baumgart  
 Dr. Joseph and Mrs. Cherie Baylor  
 Donald and Elizabeth Becker  
 Jack and Betty Benjamin  
 Jeffrey Berger  
 Robert and Cindy Bernardin  
 Vince and Mary Bernardin  
 Dr. John and Mrs. Debbie Bizal  
 Rozanna Blackford  
 Debbie Blake  
 Rev. Jim Blessinger  
 Holly Boeke  
 Elmer Bohnsack  
 Patricia Borst  
 Randy and Barbara Brack  
 Catherine Brackmann  
 Mike and Gay Bradford  
 Ernie and Mary Jane Bradley  
 Martha Brandt  
 Diana Braun  
 Dan and Mary Ann Breidenbach  
 Martha Brockmole  
 Michael and Marilyn Broshears  
 Sandra Bruno



# Donors

Michael and Becky Burdick  
Sally Callen  
Casey and Lisa Calvert  
James and Justine Cameron  
Allen and Jenny Campbell  
Paul and Barbara Cannon  
Tina Caputo  
Reynaldo and Rosario Carandang  
Jeffrey and Faye Cardin  
Terry and Sharon Carlton  
Paul Carson  
Gloria Carter  
William and Christine Cassidy  
William and Dawn Caudill  
Ronald and Diana Cavins  
Central United Methodist Church  
Gary and Carol Chandler  
Roger and Georgia Chapman  
Santaram and Ratnam Chilukuri  
Christ Church United Church of Christ  
Carol Christian  
Steve and Stacey Church  
Bonnie Cissell  
Randolph Clark  
Dr. Thomas and Mrs. Margaret Clark  
Patricia and Lloyd Claybaugh  
James and Carol Claybourn  
Margaret Clem  
John and Natalie Cline  
Kevin and Julie Coleman  
Kay Conder  
Nadine Coudret  
Carolyn Crane  
Shirley Cree  
William and Deborah Cronin  
Roger and Mary Cruz

Mary Culley  
Steve and Alma Dabrowski  
Barbara Daming  
Marcella Daugherty  
Joshua and Jennifer Davis  
Mary Lou Davis  
Harold and Mary Decamps  
Steve and Rebecca Deutsch  
Thomas Dick  
Janet Dill  
Don\* and Ruth Dormeier  
Donna Drone  
Larry and Joyce Durchholz  
Kim Easy  
John and Ann East  
Gilbert Effinger  
Sharon Effinger  
Magdalen Eickhoff\*  
Janet and David Ellert  
Rick and Kathy Elliott  
Mary Engelland  
Mike and Ann Ennis  
Evansville Dental Assistants Society  
Janice Farmer  
Harry Faulkner and Shelley Jones  
Kenneth and Wilma Fehd  
Ray and Sarah Feller  
First Church of the Nazarene  
of Mt. Vernon  
Robert and Edna Fischer  
Marilyn Fisher  
Sarah Flach  
Judith Fleming  
George and Alma Flowers  
Jim and Betsy Flynn  
Jim and Pat Foley

Robert and Barbara Forrester  
Marlene Fowler  
Gerald Fowler  
James and Jennifer Fox  
John and Mary Freeman  
Steven and Marcia Frey  
Richard and Sarah Gahagen  
Carol Gambrel  
Leonard Gansman, Jr.  
Brian and Jane Garrett  
Linda Gatewood  
Betty Geiser  
Bill and Linda Gilbert  
Emma Gilham  
Vicky Gonzales  
GoodSearch  
Richard and Patricia Grannan  
Sally Gries  
John and Rosalynn Griffith  
Alaina and Tom Griggs  
Phyllis Grimm  
Michael Grubstein  
Tim and Barbara Grunow  
Susan Guerretaz\*  
Maurice and Marianne Hahn  
Joe and Judi Hahn  
Darrell and Donna Hansen  
Jeffrey and Angelia Harger  
Roger Harker  
Michael and Lisa Harris  
Richard and Sandra Harrison  
Arthur and Marilyn Harshbarger  
Stephen Hart  
Melissa and James Harter  
Ronald and Marjorie Hartmann  
Betty Hartz  
Douglas and Janice Hatler  
Mike and Jennie Head  
Eileen Heard  
Norman\* and Eileen Heard  
Susan and Dennis Heathcott  
Debra Hebbeler  
Delores Hedeman  
Dan and Kim Hermann  
Dennis and Janet Herr  
Thomas Heuring  
Frederick Hicks, Jr.  
Donald Higginson  
Peter and Connie Hillenbrand  
Jesse and Carolyn Hines  
Alan and Sonda Hite  
Jeffrey and Karen Hodge  
Vera Hodge  
Jean Hodge

Mark and Leah Hoffman  
Mike and Gail Hoffman  
Raymond and Nancy Holder  
Ron and Kathy Hollander  
Ron and Faye Houston  
Marlene and Barton Huffaker  
Scott and Diana Hurt  
Bill and JoAnn Hussmann  
Immanuel Presbyterian Church  
Indiana Conference of the United  
Methodist Church  
David and Rebecca Isley  
Lynn Isvik  
Patricia Jackson  
Joseph and Jo Ann Jarboe  
Geneva Johnson  
Patricia Johnson  
Johna Joines  
Alice Jones  
James and Brenda Jost  
Rosalie Julian  
Donald and Darlene Kaiser  
Carol Kambanis  
Karen Heard Law Office  
Karen Katafiasz  
Sharon Katterjohn  
William and Lisa Keeney  
Maurice and Norine Keller  
Dan and Esther Kelley  
Brandon Kelley  
Gail Kelley  
Steve Kercher  
Barbara Kerney  
John Kiefer  
Mary Kifer  
Thomas and Kathleen Kilmartin  
Dorothy Kincaid  
Victoria Kindred  
Frances King  
Joe and Shirley Kirby  
Donald Kleinschmidt  
Harvey and Carol Klenck  
Eric and Miranda Knight  
Wanda Koch  
Allen and Lori Koester  
Eric Kohut  
Marie Kohut  
Philip Kohut  
Bart and Kathy Kormelink  
Tim and Michelle Krack  
John and Donna Krampe  
George and Elizabeth Krietemeyer  
Steve Kroeger  
Don and Elaine Kuhn

Steven and Emily Kuykendoll  
Jennifer Lamp  
Daniel and Mary Lasher  
Barbara Ledford  
Rev. Seung Hu Lee and  
Mrs. Jung Ae Sim  
Frances and Charles Leggett III  
Jim and Evelyn LeMond  
Charles and Rena Lilly  
Rev. Steve Lintzenich  
Nick and Kevin Long  
Julie Lovins  
M. Imogene Lutz  
Paul and Dorothy Lynch  
Macy's Foundation  
Sr. Jeanne Maffet  
Harold and Iris Mann  
Yvonne and Bryan Mans  
Pat and David Marienau  
John and Cheryl Marx  
Allan and Sharron Mattingly  
Stacy and Brian Maurer  
Thomas and Mary May  
Christina and Lance Mayes  
Vickie McClatchy  
Shawn and Joan McCoy  
Dan and Judy McEver  
Tim McKinney  
Dr. Darrell and Mrs. Eula Megli  
Menage Lore Red Hat Club  
Jeanne and Ken Mesker  
Don Metzler  
Mona Meyer  
Michael W. Williams Construction  
Jerry and Dolores Miller  
Elizabeth Miller  
Beverly Milligan-Rice and Charles Rice  
Mike and Roma Mills  
Jim Mills  
Carolyn Mingay  
William and Deborah Minton  
Timothy and Linda Minton  
Clarence and Lucille Mitsdarffer  
Katherine and Henry Monahan  
Wayne Montgomery  
G. Thomas Moor and Veronica Reis  
John and Gail Moran  
Don and Susan Mosbey  
Andy and Beth Mosier  
Cletus and Rosemary Muensterman  
Pam and Paul Naab  
Nancy Neel  
Stanley and Joan Nevill  
David and Carol Nurrenbern







Edna O'Daniel  
Maureen O'Daniel  
Geraldine Oeth  
Vickie Orth  
Larry Osborne  
Anna Outlaw  
Lee Overley  
Kathy Oxbey  
Don and Sandy Pace  
Donald Pace  
Robert and Renee Palmer  
Nina Lee Parker  
Andrew Paul  
Viola Paul  
Dan and Dorothy Pauli  
Christine Pauli  
Jerlene Peach  
Sr. Theresa Peck  
Larry and Carol Peckenpaugh  
Dennis and Pamela Pepper  
Wayne and Sally Perkins  
Jon and Jane Perkins  
Jim and Lori Pierre  
Steve and Rebecca Piper  
Lucille Pitt  
Don and Connie Pitzer  
Kaye Platts  
John and Linda Polin  
David and Lisa Polk  
Richard and Elva Posewitz  
Jeff and Verna Postal  
D. Ann Preske  
Janette and Jim Prickett

Mike and Dana Purdy  
Ryan Purkey and  
Shannon Werner-Purkey  
John Raibley  
Donald and Katherine Ramsey  
William Rauscher  
Marvin and Ruth Redman  
Mike and Michele Reffett  
Dr. Robert and Mrs. Paulette Reid  
Patricia Reisinger  
Kathy Reitz  
Cathy and Dennis Renner  
Robert and Linda Renock  
Edward and Judith Reuter  
Betty Richards  
Mary Riess  
Carolyn Ringham  
Alan and Vicki Rister  
Melinda and Kenneth Robbins  
Deborah and Richard Robertson  
Richard and Jane Royster  
Mary and Pete Ruthenburg  
Salem United Methodist Church  
James and Beverly Salmon  
Joseph and Aloise Sammet  
Allen Sanderson  
Stephen and Diana Sanner  
Ron and Alvrone Sater  
C. J. and Pat Sauer  
Mary Lou Sauer  
Mark and Susan Schaefer  
Janet Scharf  
Jane Scheller

Thomas Scheller  
Ken and Beth Schenk  
Elaine Schmits  
James Schmitt  
Schnuck's  
Peggie Schnur  
Carl Schofield  
Lydia Schroeder  
Ann and Brian Schuessler  
Kenneth and Janet Schultheis  
Joyce Schutz  
Jack and Marilyn Scurlock  
Richard and Janice Seidehamel  
Todd and Beth Seward  
Erlus Shatara  
David and Mary Shepard  
Maureen and Carl Shepherd  
Dr. Mohit Sheth  
Christine Shipley  
Mike and Becky Shoulders  
Scott and Elaine Shreffler  
Jeannine Shumate  
Jeanne Silliman  
Kathleen Silver  
Katie Sims  
Sisters of St. Benedict  
Helen Skuggedal Reed  
Dr. Richard and Mrs. Melinda Sloan  
Marjorie Smith  
Mark and Arrinda Smith  
John and Rebecca Smither  
Richard and Diana Soellner  
Tom and Laura Sommerfield  
Marylu Sonntag  
Anthony and Doretha Spahn  
Ken and Charleen Spear  
Alfred\* and June Spillman  
Ellen and Brian Spradlin  
St. Joseph Catholic Church  
St. Wendel Auto Parts & Service  
Bettye Statham  
Charles and Phyllis Steber  
Ronald Stevens  
Rhonda Stirsman  
Mindy and Jason Stoermer  
Terence and Beverly Stofleth  
Jennifer Straeffer  
Russ and Dorothy Stratman  
John and Carol Stumpf  
Marvin and Beverly Sunderman  
Anna Susat  
Nancy Synowiec  
Martha Talley  
Marilyn Taylor

Amy Tenbarge  
Joe and Ann Tepool  
Texas Roadhouse  
Steven and Angela Theising  
Ethel Thomas  
Samuel and Beth Thompson  
Charlotte Thompson  
Don and Diana Thompson  
Nick and Katie Tieken  
Tom and Beverly Tison  
Bob and Mary Titzer  
Jim and Margie Tomes  
James and Grace Toone  
Mark and Jeanne Tornatta  
Rita Torrence  
Daniel Townsend  
Jack and Mary Pat Trainum  
Richard and Joy Tredway  
Trinity United Methodist Church  
William and Diane Tucker  
John Tucker  
Elgan Turner  
Charles Ubelhor  
David and Jackie Underhill  
Harlan and Joan Van Over  
Raymond and Angela VanWinkle  
Jo Ann Vaughn  
Tom and Kathy Verkamp  
Catherine Viecele  
Marjorie Vogel  
Jim and Marilyn Voyles  
Gregg and Catherine Wagner  
Jim and Joyce Wagner  
Ruth Wahoski  
Stephen and Marilyn Ward  
Ann Charles Watts  
Martha Weatherford  
Harry and Deborah Weatherholt

Paul\* and Carol Webb  
John and Shirley Weber  
Bob and Jo Ann Weber  
Kevin and Cynthia Weil  
Susan and David Weis  
Ronald and Lellon Sue Weisgerber  
Arthur and Mary Weiss  
Dennis and Marita Welp  
Ken and Janet Wempe  
Mike and Linda Wempe  
Jim and Viki Whitis  
Jerry and Doris Wiegand  
Gerald Wildeman  
Joseph and Linda Wildeman  
Jeffrey and Michele Wildeman  
Patricia Wilke  
Steve Wilke  
Earl and Rosalee Will  
Karen Williams  
Thomas and Judy Williams  
Patricia Williams  
Linda Williams  
Mark and Barbara Wilson  
Sandi Wilson  
Franklin Witherbee  
Carol Witmeier  
Lewis Woodruff  
Wortman LTD  
Danica Wright  
Yao Wu  
Philip and Sherilyn Wuertz  
Dorothy Wyatt  
Jackson Yerkey  
Stephen Zehr

\* Denotes those who have passed



# Staff

**Beth Folz** *Executive Director*  
bfolz@evansvillehabitat.org

**Lee Jerstad** *Communications Manager*  
ljerstad@evansvillehabitat.org

**Sr. Jane Michele McClure** *Major Gifts Officer*  
jmcclure@evansvillehabitat.org

**Jeanne Mesker** *Mortgage/Administrative Specialist*  
jmesker@evansvillehabitat.org

**Donna Milam** *Family Services Director*  
dmilam@evansvillehabitat.org

**Steve Smith** *Construction Director*  
ssmith@evansvillehabitat.org

**Mindy Stoermer** *Data Systems Specialist*  
mstoermer@evansvillehabitat.org

**Andrea Ward** *Volunteer Workforce Manager*  
award@evansvillehabitat.org

**Susan Weis** *Development Assistant*  
sweis@evansvillehabitat.org

**Gail Knight Williams** *Director of Development*  
gkwilliams@evansvillehabitat.org

**Kerry Wire** *Construction Manager*  
kwire@evansvillehabitat.org

**Jennifer Wuchner** *Finance Director/Office Manager*  
jwuchner@evansvillehabitat.org

*Because  
of this  
house...*



**Habitat  
for Humanity®**  
of Evansville

1401 N. Fares Avenue  
Evansville, IN 47711